

DOVE
ASSOCIATES

Horticultural Consultants

Weggs Farm

Common Road

Dickleburgh, DISS

Norfolk IP21 4PJ

Tel: 01379 741200

Fax: 01379 741800

Email: info@dovebugs.co.uk

www.dovebugs.co.uk

Information

Silver leaf disease

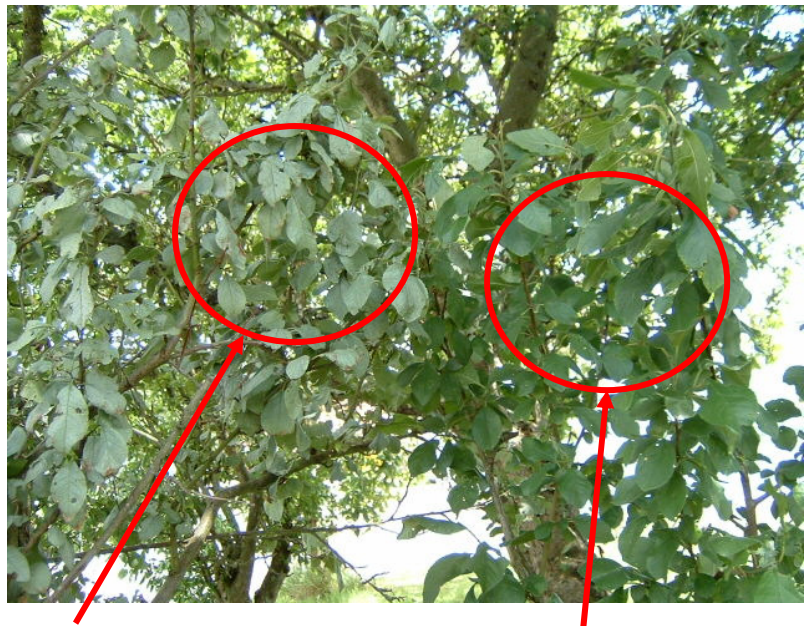
This is a fungal disease caused by *Chondrostereum purpureum*. Symptoms include silvering of foliage and branch dieback. It is not a uniform disease in that it has been found starting on one particular part of a plant as well as all over the foliage in some cases. Bracket fungi can be produced on stems and tree trunks but this is usually at a late stage of infection.

The silver effect is produced by a toxin released by the fungus and is not the fungus itself. Infection occurs through wounds or damaged tissue on stressed plants. The toxin released by the fungus can travel through the sap, affecting other areas of the plant above the initial point of infection. Brown staining can be seen if an infected stem is cut.

Susceptible plants include Victoria plum, Crataegus, Rosa, Ribes, Laburnum, Populus, Prunus, Eucalyptus and rhododendrons.

Prune back to good wood and burn the prunings.

Consider applying protectant fungicides post-pruning such as Bravo 500 (EAMU 2011-1130)



**Silver leaf
infection**

Clean leaf

Use plant protection products safely. Always read the label and product information before use

Dove Associates shall in no event be liable for any loss or damage caused by the use of products mentioned in this document

© Dove Associates 29/10/15